

# Nintendo Switch™

## Carrying case & screen protector

### Health and Safety Information

Please read and observe the health and safety information. Failure to do so could result in injury or damage. Adults should supervise the use of this product by children.

#### ⚠ WARNING – General

- Keep these products and packaging materials away from young children. Packaging items may be swallowed.
- Do not fold or crease the screen protector or push forcefully on the touch screen.
- These products cannot completely prevent scratches or other damage that may occur to the touch screen.

### Carrying Case

- The pocket can be used to stand up the console so that it can be played while it's in the carrying case. Do not stand the console up while it is connected to the AC adapter, and do not stand it up on unstable surfaces.
- Do not leave the console switched on while it is stored in the carrying case.
- Make sure that the Joy-Con™ controllers are attached to the console (HAC-001 or HEG-001) when it is stored in the carrying case.

### Screen Protector

#### How to use

- 1 Please ensure you use the correct screen protector for your console model.

- 2 Use the included dirt-removing sticker to remove dirt, dust and fingerprints from the Nintendo Switch touch screen.

- 3 Peel the backing film from one half of the screen protector.

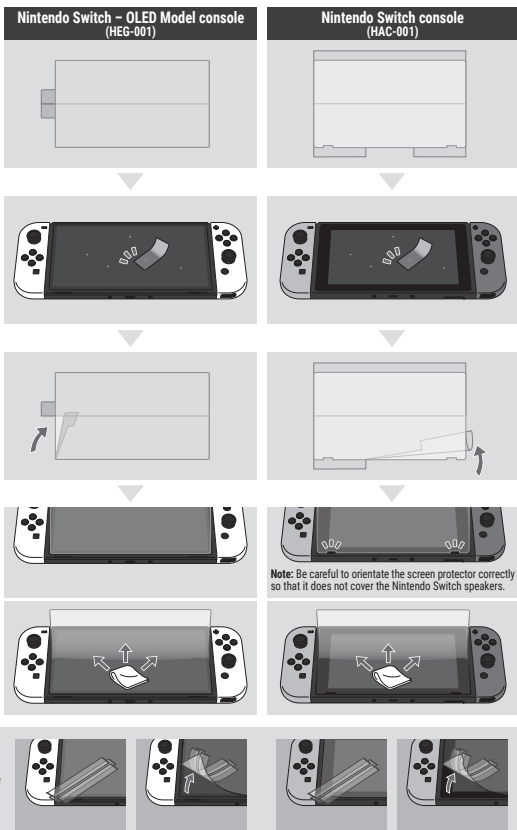
**Note:** Any dirt that appears on the screen protector before it is applied can be removed with cellophane tape.

- 4 Carefully align the screen protector with the edges of the Nintendo Switch touch screen. Lower it onto the screen, smoothing the affixed areas with a cloth to prevent air bubbles from becoming trapped between the screen and the screen protector. Peel off the rest of the backing film and apply the other half of the screen protector as above.

**Note:** Be careful to orientate the screen protector correctly so that it does not cover the Nintendo Switch speakers.

#### If the screen protector is crooked

Affix cellophane tape to one corner of the screen protector and carefully peel it off, then proceed again from step 4.



### Nintendo Customer Support

<https://nintendo.sa>

**Manufacturer:** Nintendo Co., Ltd., Kyoto 601-8501, Japan  
**Importer in KSA:** AIC Trading Ltd 8113 Al Thoumamah Rd, Ar Rabi, Riyadh 13315